



# MONTHLY MEMBERSHIP PROGRESS REPORT

District 120

Results as of: 12/31/2017

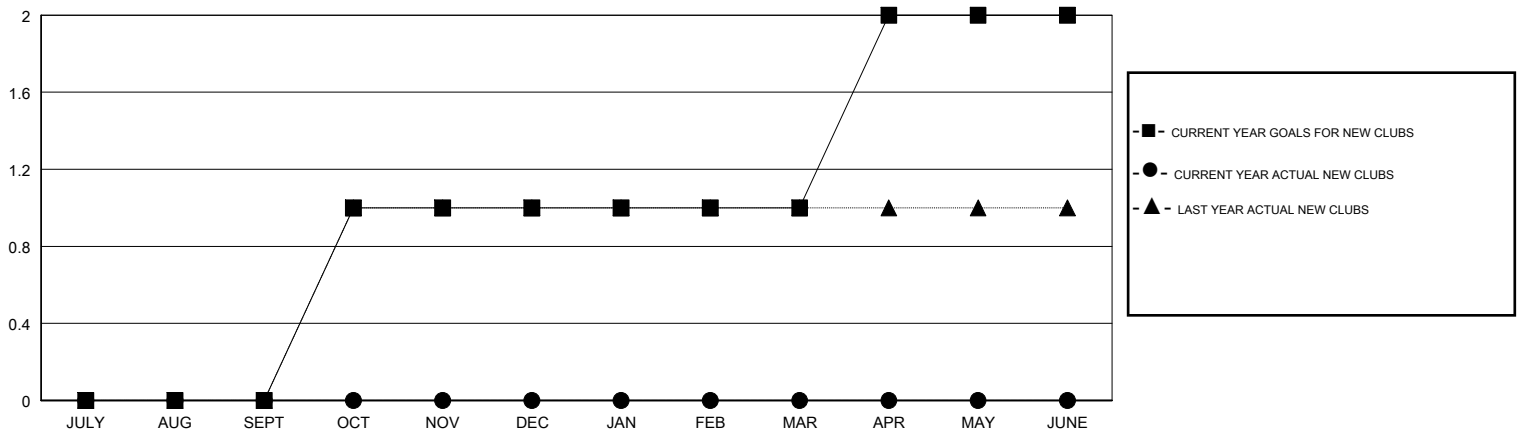
GMT: ANTTI FORSELL

LOCATION ESTONIA

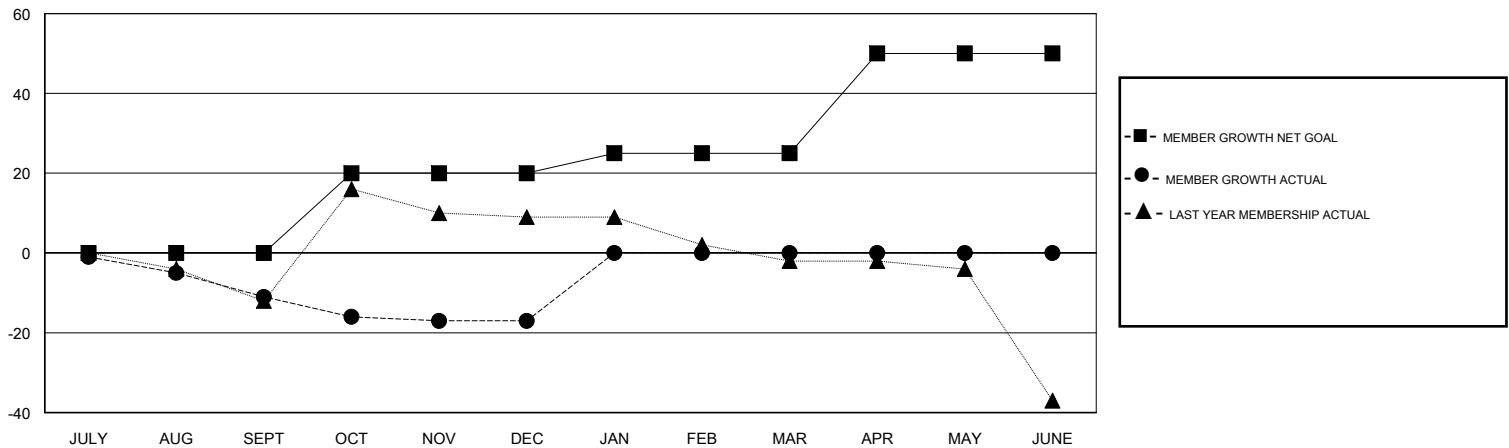
GMT CA

Clubs				Members			
RESULTS FOR 2017-2018				RESULTS FOR 2017-2018			
QUARTER	NEW CLUB GOAL	NEW CLUBS	DROPPED CLUBS	QUARTER	MEMBER GROWTH NET GOAL	MEMBER GROWTH ACTUAL	DROPPED MEMBERS ACTUAL (including transfers)
JULY/AUG/SEPT	0	0	2	JULY/AUG/SEPT	0	5	16
OCT/NOV/DEC	1	0	0	OCT/NOV/DEC	20	10	16
JAN/FEB/MAR	0	0	0	JAN/FEB/MAR	5	0	0
APR/MAY/JUNE	1	0	0	APR/MAY/JUNE	25	0	0

GOALS AND ACTUAL NEW CLUBS CUMULATIVE



GOALS AND ACTUAL MEMBERS CUMULATIVE



DROPPED CLUBS: 2	12 CLUBS OF 61 ADDED 1 OR MORE NEW MEMBERS	<u>GENDER DISTRIBUTION</u> MALE 866 (71.51%) FEMALE 345 (28.49%) Women Percentage Fiscal Year Goal: 31%
<u>DROPPED MEMBERS</u> DECEASED 2 CLUB CANCELLED 0 OTHER 30 TOTAL 32	<a href="#">CLICK HERE FOR CUMULATIVE MEMBERSHIP DATA</a>	TOTAL FAMILY UNIT MEMBERS 81 FAMILY MEMBERS PAYING HALF DUES 42